



**4/260 Old South Head Road Bellevue Hill NSW**

3 2 2

Spacious, modern and exceptionally convenient, this exclusive lifestyle apartment enjoys an elevated position within 'The Claremont', a full brick security block consisting of only nine residences. The property captures a leafy outlook and features quality appointments throughout. Parks, shops, cuisine options and public transport can all be found in the immediate vicinity of this superb location. Additionally, the home is easily accessible to Bondi Junction's shopping amenities and world famous Bondi Beach.

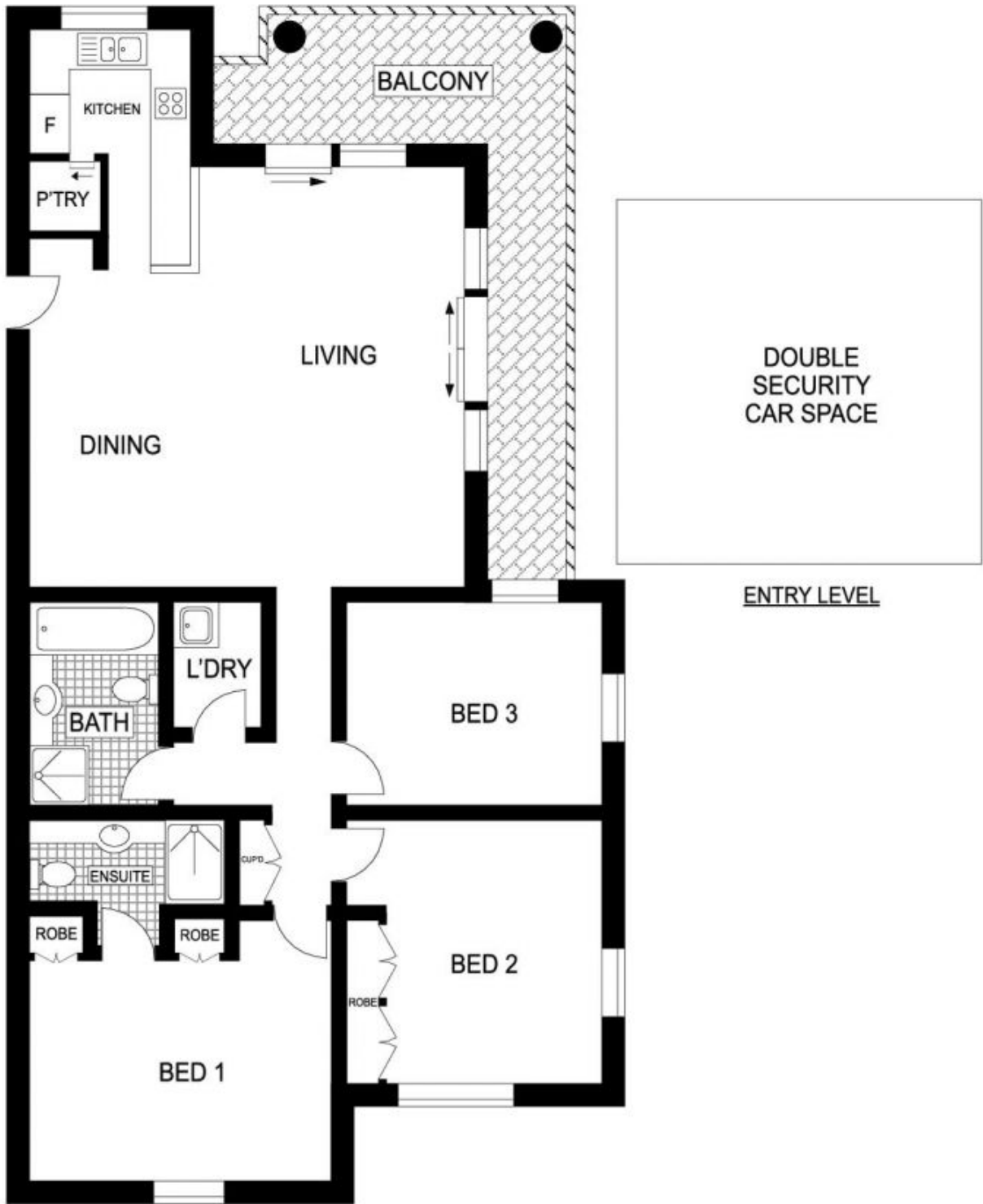
**View :** <https://www.the-edge.com.au/sale/nsw/eastern-suburbs/bellevue-hill/residential/apartment/5824824>

3 bedrooms, 2 bathrooms, 2 parking

- Good sized living and dining spaces.
- Wraparound entertaining balcony
- Deluxe kitchen with Smeg appliances
- Sleek bathrooms, dedicated laundry



**Achilles Peshos**  
02 9267 9832



LEVEL TWO



4/260 OLD SOUTH HEAD ROAD

BELLEVUE HILL



**Ray White.**

ALL INFORMATION CONTAINED HEREIN IS GATHERED FROM SOURCES WE BELIEVE TO BE RELIABLE. HOWEVER WE CANNOT GUARANTEE ITS ACCURACY AND INTERESTED PERSONS SHOULD RELY ON THEIR OWN ENQUIRIES. DIMENSIONS ARE APPROXIMATE