



153/6C Defries Avenue Zetland NSW

1 1 1

DEPOSIT TAKEN

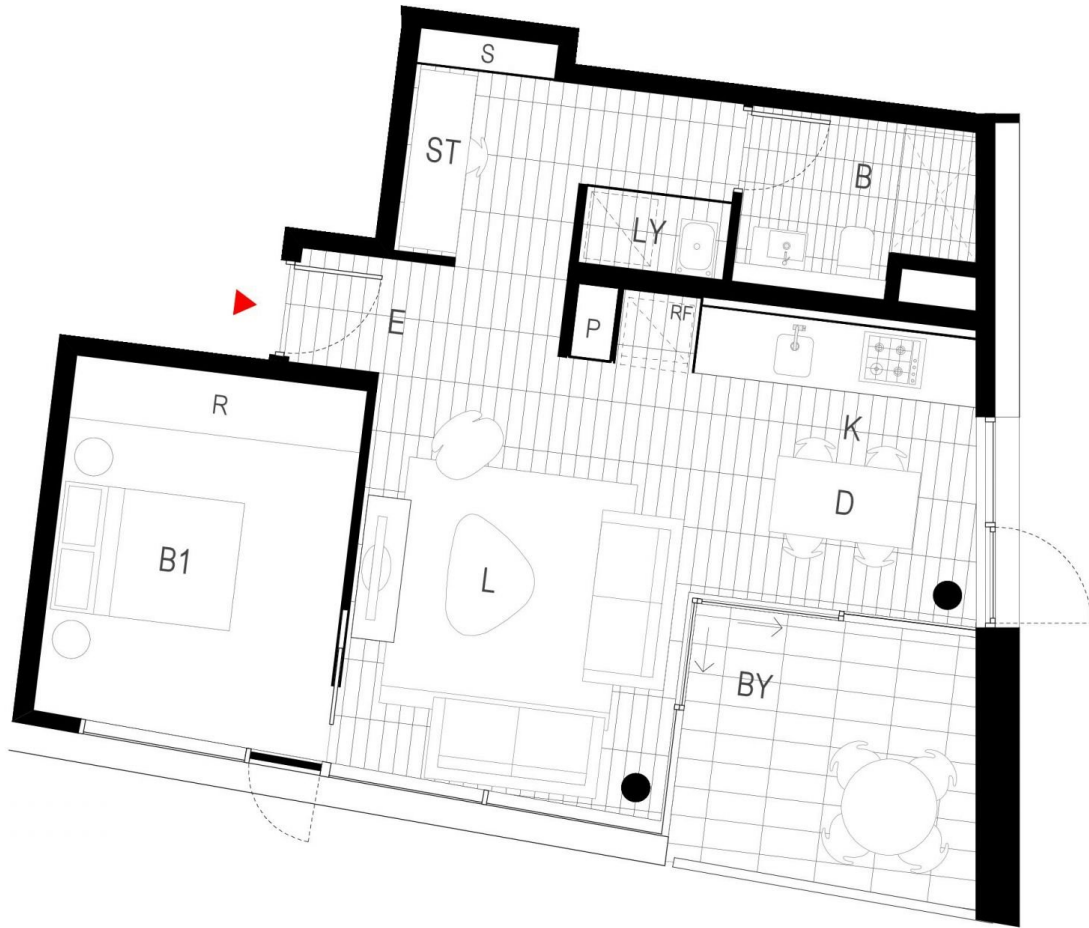
The Edge Property Agency is pleased to offer this vibrant apartment located on the top floor of the Apex development. Ideally positioned with quick and easy access to all of Sydney's attractions.

- A spacious living area that leads onto a large entertaining style terrace
- Great corner position
- High ceilings with skylights in the living area
- Open plan kitchen
- Plenty of storage and cupboard space
- Internal laundry
- Generously proportioned bedroom with built ins
- Air-conditioning

Building Size : 60 sqm
Land Size : 60 sqm
View : <https://www.the-edge.com.au/lease/nsw/eastern-suburbs/zetland/residential/apartment/6366410>



Kyrstie Peshos
9267 9832



Legend:

B	Bathroom	BY	Balcony	D	Dining	EN	Ensuite	L	Living Room	P	Pantry	S	Store	TCE	Terrace
B1,2	Bedroom 1,2	CY	Courtyard	E	Entry	K	Kitchen	LY	Laundry	R	Wardrobe	ST	Study	WIR	Walk-in Robe

