



78-84 Kippax Street Surry Hills NSW

Designed by leading architects MHND Union and built to the highest standards by Calida. No expense has been spared when redefining 78-84 Kippax Street into one of Surry Hills elite buildings.

THE TENANCIES

Single floor plates available ranging from 111 sqm to multiple floors up to 1148 sqm.

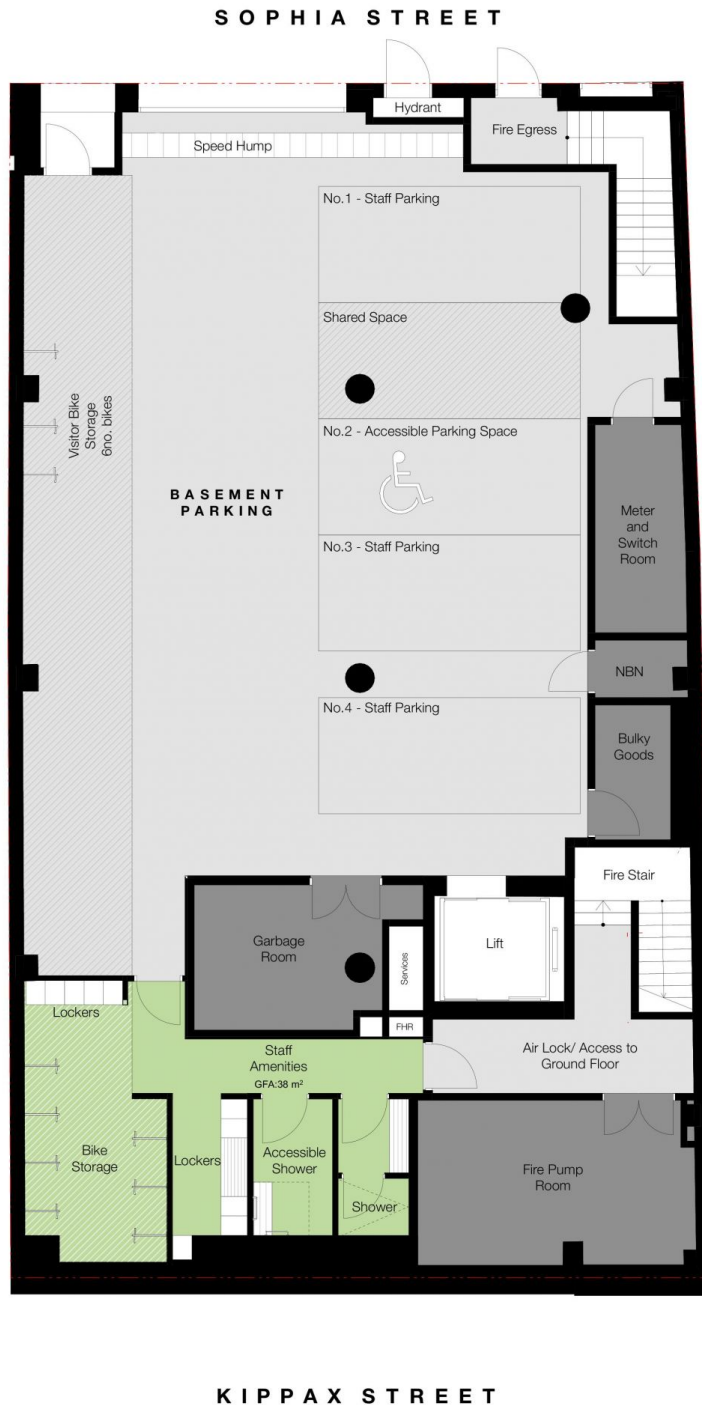
Levels 1, 3 & 4 offer flexible floor plates from 111 sqm to 281 sqm.

Each floor features polished concrete, high ceilings, exposed air-conditioning and modern LED lighting, designated kitchen area and ambulant washroom facilities.

Price : Contact Agent
Building Size : 111 sqm
View : <https://www.the-edge.com.au/lease/nsw/eastern-suburbs/surry-hills/commercial/offices/6584841>



Achilles Peshos
02 9267 9832



BASEMENT PLAN
1:100



DEVELOPMENT MANAGER:



BUILDER:



ARCHITECT:



DRAWING TITLE:

LEASING PLANS
Basement

PROJECT ADDRESS:

78-84, NSW SURRY HILLS 2010

CLIENT:

GRUNSTEIN 78 PTY LTD