



R/78 Kippax Street Surry Hills NSW

Designed by leading architects MHND Union and built to the highest standards by Calida. No expense has been spared when redefining 78-84 Kippax Street into one of Surry Hills elite buildings.

The Ground floor consists of 261 sqm of highly exposed retail space. The space also features zone air-conditioning, high ceilings, windows on two sides, male and female amenities.

Ideal space for fashion, showroom, health as well as food and beverage operators.

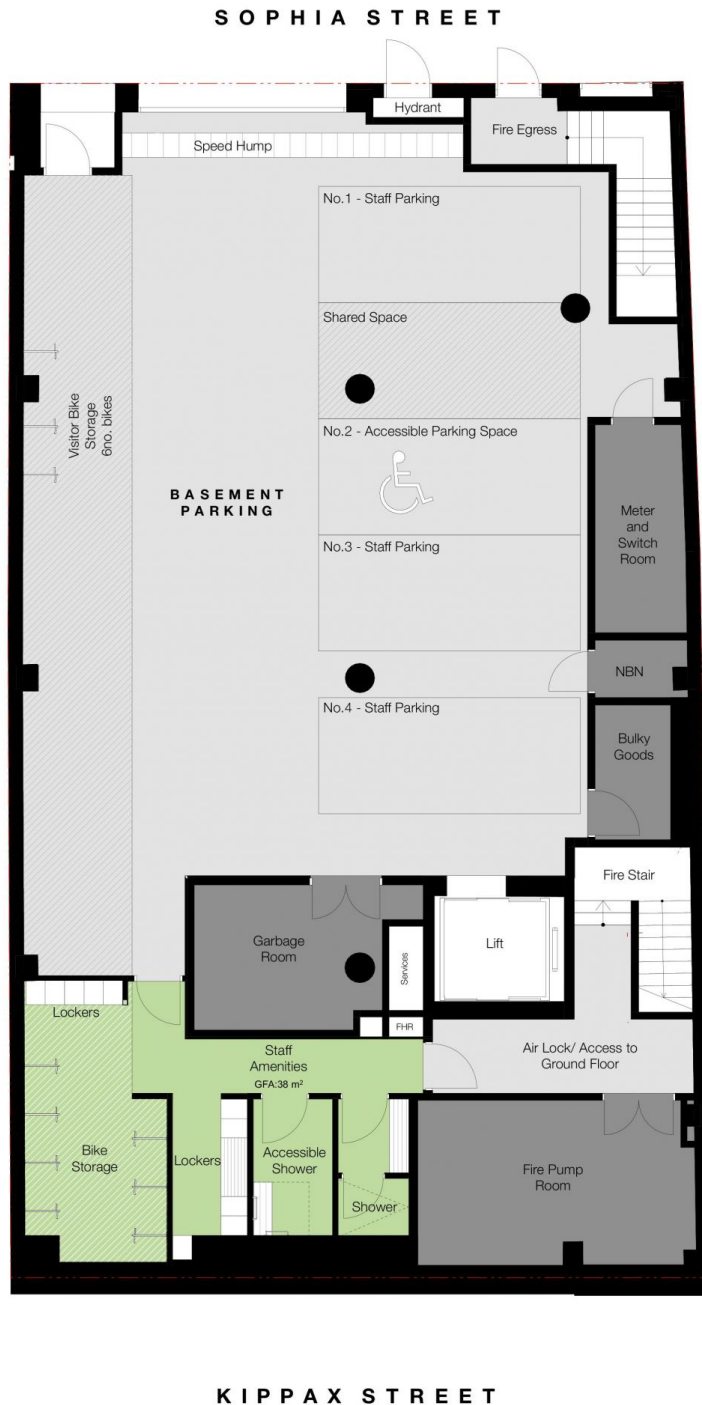
TO SHARE

Level 7 - Communal roof space that is perfect for entertaining or relaxing, offering breathtaking city skyline

Building Size : 1983 sqm
View : <https://www.the-edge.com.au/lease/nsw/eastern-suburbs/surry-hills/commercial/offices/6620425>



Achilles Peshos
02 9267 9832



BASEMENT PLAN
1:100



DEVELOPMENT MANAGER:



BUILDER:



ARCHITECT:



DRAWING TITLE:

**LEASING PLANS
Basement**

PROJECT ADDRESS:

78-84, NSW SURRY HILLS 2010

CLIENT:

GRUNSTEIN 78 PTY LTD