

Level 6/01/78-84 Kippax Street Surry Hills NSW

Designed by leading architects MHND Union and built to the highest standards by Calida. No expense has been spared when redefining 78-84 Kippax Street into one of Surry Hills elite buildings.

Building Size : 287 sqm
View : <https://www.the-edge.com.au/lease/nsw/eastern-suburbs/surry-hills/commercial/offices/6861698>

THE TENANCIES

Single floor plates available ranging from 287 sqm to multiple floors up to 1148 sqm.

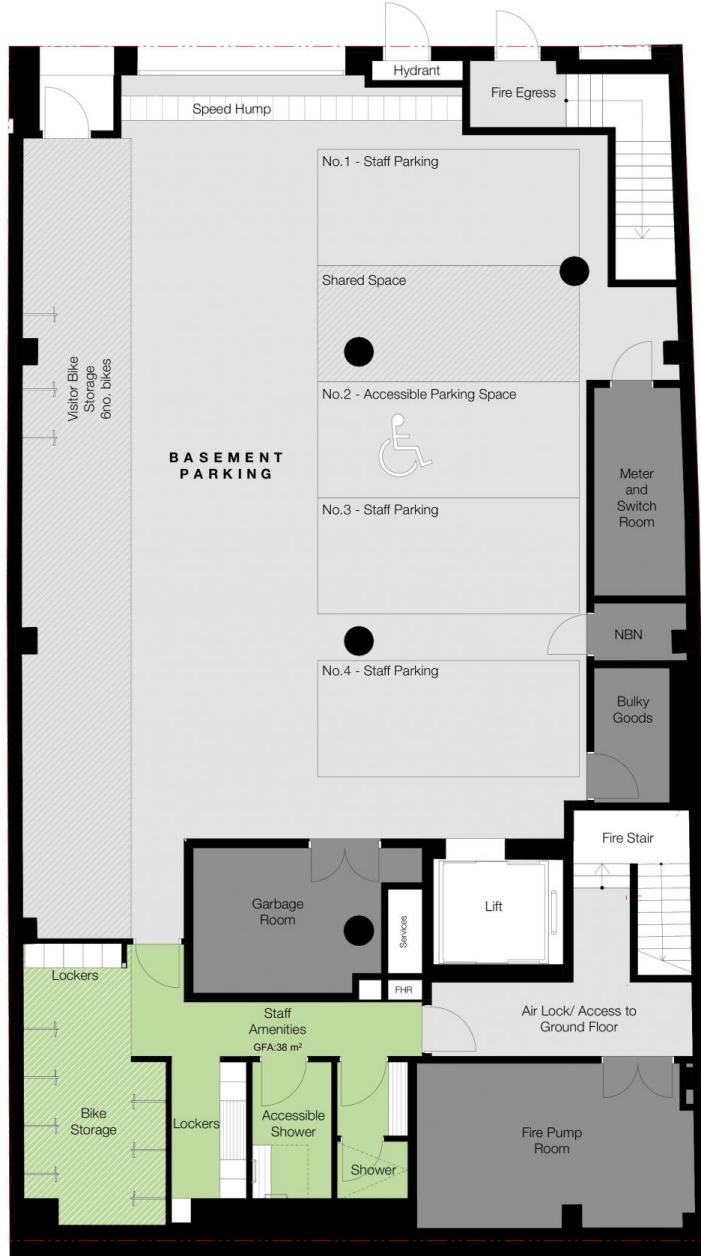
Features include

- Polished concrete
- High ceilings
- Exposed air-conditioning
- Modern LED lighting
- Flexible layout allowing for free flowing fitouts



Achilles Peshos
02 9267 9832

SOPHIA STREET



KIPPAX STREET

BASEMENT PLAN
1:100



DEVELOPMENT MANAGER:
RESTIFA & PARTNERS

BUILDER:
CALIDA

ARCHITECT:
MHNDUNION
35 RICHARDS LANE
SURRY HILLS SYDNEY NSW 2010
T +61 2 9101 1111
F +61 2 9101 1100
www.mhndu.com
Notional Accredited
Sydney Metropolitan
NSW Registration Number 4507

DRAWING TITLE:
**LEASING PLANS
Basement**
PROJECT ADDRESS:
78-84, NSW SURRY HILLS 2010
CLIENT:
GRUNSTEIN 78 PTY LTD