



Level 1/01/78-84 Kippax Street Surry Hills NSW

Designed by leading architects MHND Union and built to the highest standards by Calida. No expense has been spared when redefining 78-84 Kippax Street into one of Surry Hills elite buildings.

THE TENANCIES

Single floor plates available ranging from 287 sqm to multiple floors up to 1148 sqm.

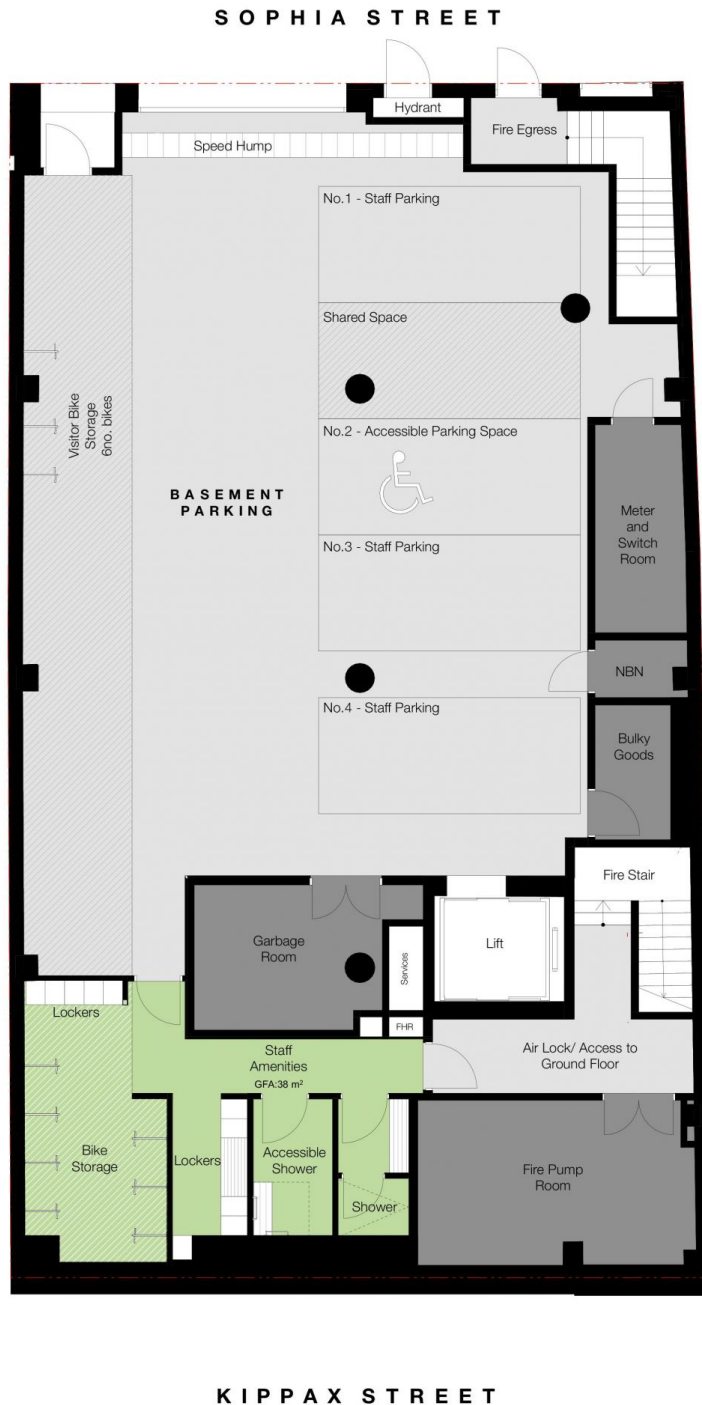
Features include

- Polished concrete
- High ceilings
- Exposed air-conditioning
- Modern LED lighting
- Flexible layout allowing for free flowing fitouts

Price : Contact Agent
Building Size : 287 sqm
View : <https://www.the-edge.com.au/lease/nsw/eastern-suburbs/surry-hills/commercial/offices/6861724>



Achilles Peshos
02 9267 9832



BASEMENT PLAN
1:100



DEVELOPMENT MANAGER:



BUILDER:



ARCHITECT:



DRAWING TITLE:

LEASING PLANS

Basement

PROJECT ADDRESS:

78-84, NSW SURRY HILLS 2010

CLIENT:

GRUNSTEIN 78 PTY LTD