



Level 2/201/83-97 Kippax Street Surry Hills NSW

The Edge Property Agency is pleased to offer for lease this high quality space located in a renovated security building in the hub of Surry Hills commercial precinct.

Key features include:






- North facing tenancy
- High Ceilings allowing for great natural light
- Windows on two sides
- Air-conditioning
- Kitchenette
- Open plan
- Located in a security building
- Fiber Optics and high speed internet available
- Security parking available at additional cost
- Surrounded by great cafes and bars and restaurants
- Option for polished concrete

Price : POA pa
Building Size : 192 sqm
Land Size : 192 sqm
View : <https://www.the-edge.com.au/lease/nsw/eastern-suburbs/surry-hills/commercial/offices/7165544>



Achilles Peshos
02 9267 9832

LEGEND

-  LIGHT SWITCH
-  10A DOUBLE GPO
-  CAT5 DOUBLE DATA SURFACE MOUNT RJ45
-  NOM TERMINATED TO WALL PLATE FROM PROJECTOR
-  6RU COMMS CABINET

REVISIONS TO POWER & DATA PLAN
REVISIONS TO POWER & DATA PLAN

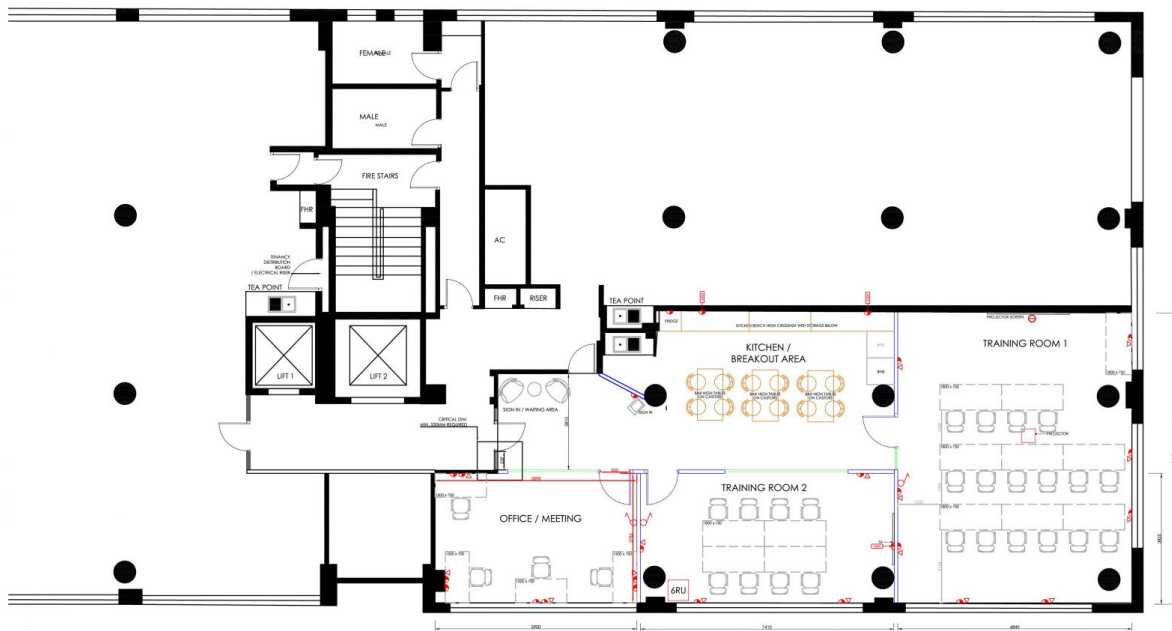
PROJECT NAME:
EDVAL

SITE ADDRESS:
**L1, 83-97 KIPPAX STREET
SURRY HILL NSW 2100**

PROPOSED POWER & DATA PLAN

DATE	SCALE	
29/01/2020	1:100 @A3	
REVISION NO.	REVISION	AM & LF
A004	8	REVISION

This drawing is protected by copyright and remains the property of United Project Management Pty Ltd. Any reproduction of any part of this plan is forbidden without written permission from United Project Management Pty Ltd. Reproduction in part or whole is forbidden without the consent of United Project Management Pty Ltd. All dimensions are to be checked on site before any work proceeds. Any dimensions from drawing to be modified before work proceeds. All methods, dimensions & areas are indicative and only should be verified on site by a registered surveyor.



SCALE: 1:100 @A3

UNITED PROJECT MANAGEMENT Pty. Ltd.