



### 26/45-51 Huntley Street Alexandria NSW

The Edge Property Agency is delighted to offer for sale this two level commercial/industrial strata suite.

Situated within a desirable commercial estate in the heart of Alexandria, the suite occupies a corner position in the complex and offers excellent exposure to Huntley Street.

Opposite the "The Grounds of Alexandria" and easy access to arterial roads, the suite is well positioned to service greater Sydney.

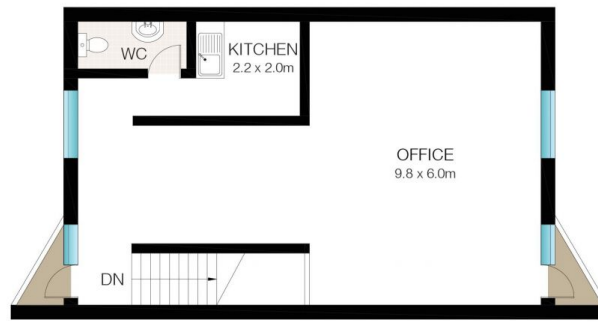
Key Features include:

- 100m2 approx. Building Area
- Roller door access on ground
- Two car spaces with direct access to tenancy
- Air conditioning

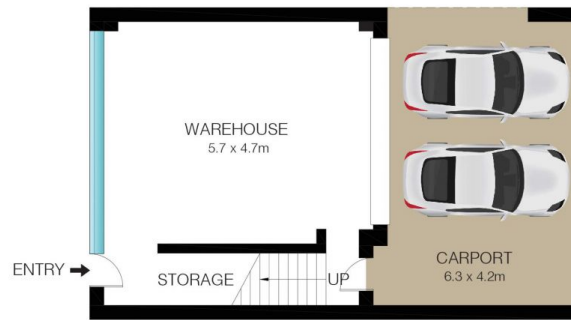
**View :** <https://www.the-edge.com.au/sale/nsw/eastern-suburbs/alexandria/commercial/offices/7201748>



**Achilles Peshos**  
**02 9267 9832**



LEVEL 1



GROUND LEVEL

0 1 2 3 4 5

This Floor Plan was prepared by WWW.CRYINGOUTLOUD.COM.AU for illustration purposes only. This document does not constitute any part of an offer or contract. Dimensions are approximate only. Copyright © 2022 Crying Out Loud. All Rights Reserved.

INT: 93m<sup>2</sup>  
EXT: 28m<sup>2</sup>



26/45 Huntley Street, Alexandria