

#### **Level 4/01/78-84 Kippax Street Surry Hills NSW**

Designed by leading architects MHND Union and built to the highest standards by Calida. No expense has been spared when redefining 78-84 Kippax Street into one of Surry Hills elite buildings.

#### **THE TENANCIES**

Single floor plates available ranging from 287 sqm to multiple floors up to 861 sqm.

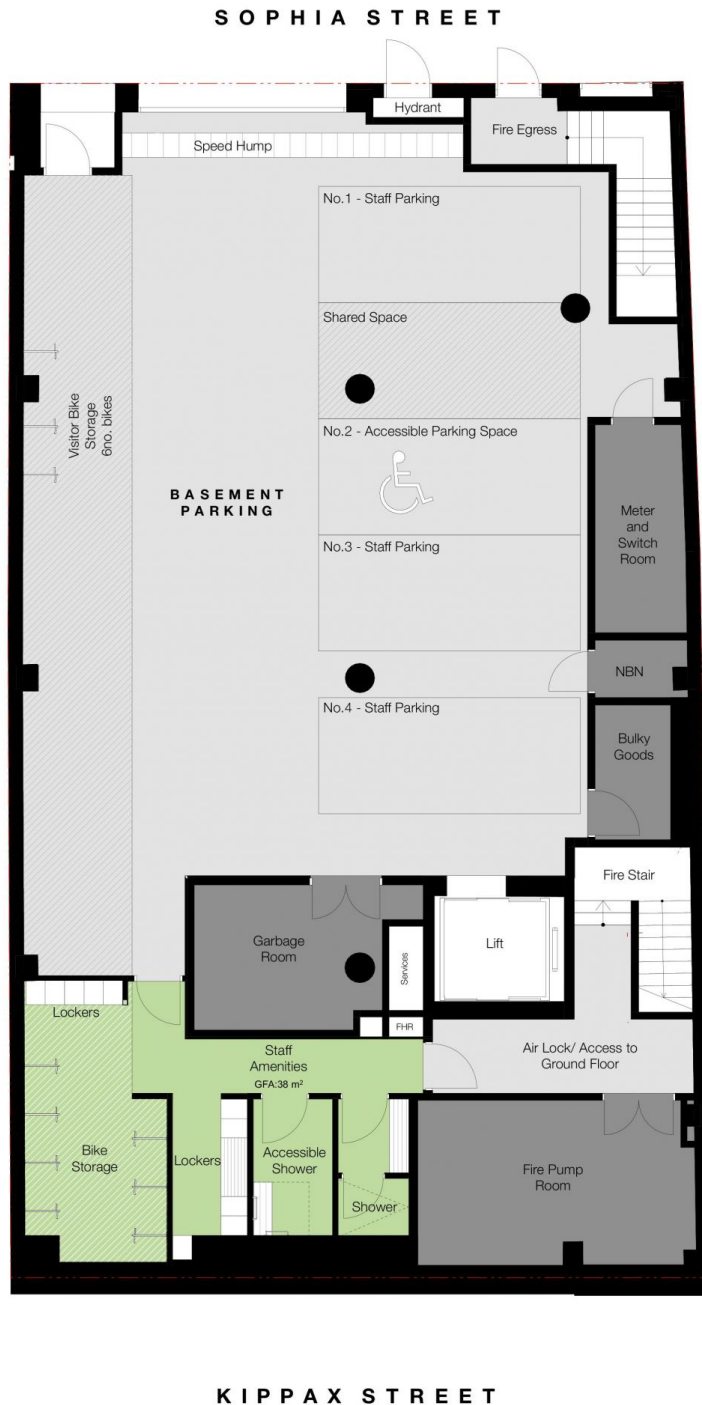
#### **Features include**

- Polished concrete
- High ceilings
- Exposed air-conditioning
- Modern LED lighting
- Flexible layout allowing for free flowing fitouts

**Price** : Contact Agent  
**Building Size** : 287 sqm  
**View** : <https://www.the-edge.com.au/lease/nsw/eastern-suburbs/surry-hills/commercial/offices/7212465>



**Achilles Peshos**  
**02 9267 9832**



BASEMENT PLAN  
1:100



DEVELOPMENT MANAGER:



BUILDER:



ARCHITECT:



DRAWING TITLE:

**LEASING PLANS**

**Basement**

PROJECT ADDRESS:

**78-84, NSW SURRY HILLS 2010**

CLIENT:

**GRUNSTEIN 78 PTY LTD**