



7/7 Penkivil Street Bondi NSW

1 1

Strategically positioned at the rear of the building is this garden apartment in the heart of Bondi.

View : <https://www.the-edge.com.au/sale/nsw/eastern-suburbs/bondi/residential/apartment/7830697>

With a private entry from the other apartments in the building, apartment 7 has direct access to a sunny and secluded courtyard.

Enjoying an abundance of natural light. Featuring an unique free flowing layout, this apartment offers an affordable entry point into the world famous Bondi.



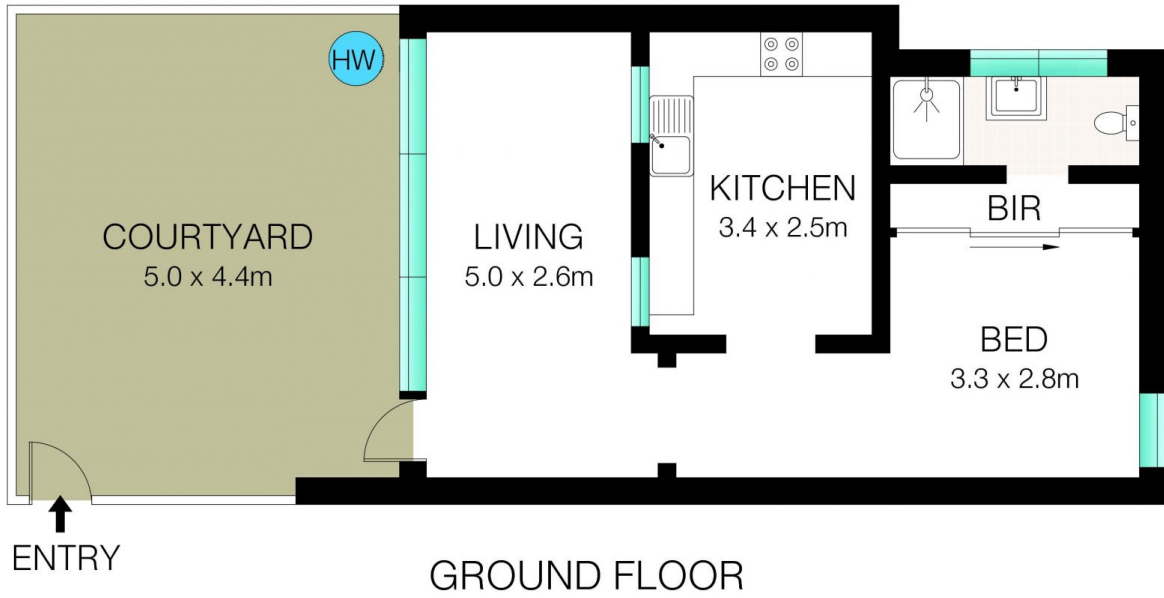
Achilles Peshos
02 9267 9832



Kyrstie Peshos
9267 9832

Features include;

- Double sized bedroom with built-ins
- Modern bathroom
- Direct access to large and secluded courtyard
- Sun soaked living room opens onto outdoor area



INT: 39m²
EXT: 23m²



This Floor Plan was prepared by WWW.CRYINGOUTLOUD.COM.AU for illustration purposes only. This document does not constitute any part of an offer or contract. Dimensions are approximate only. Copyright ©2023 Crying Out Loud. All Rights Reserved.

7/7 Penkivil Street, Bondi